

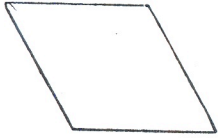
# Transformations.

Name \_\_\_\_\_

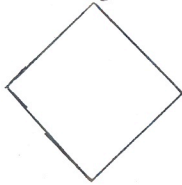
Date \_\_\_\_\_

How many lines of symmetry does each figure have?

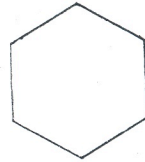
1.)



2.)

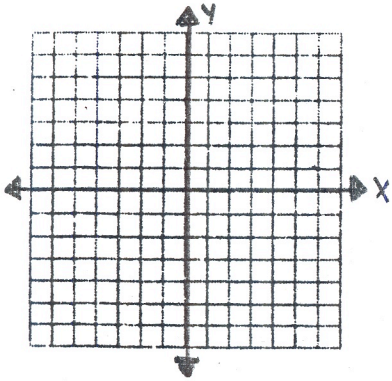


3.)

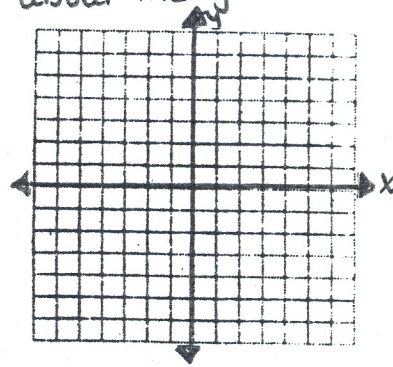


Reflect means to \_\_\_\_\_.

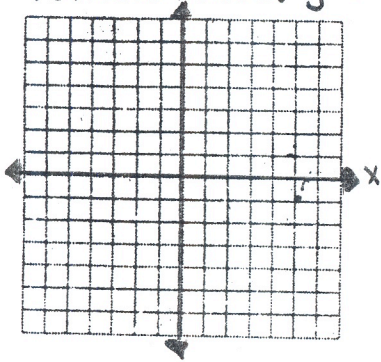
- 4.) Graph  $\triangle ABC$  with  $A(-2, 3)$ ,  $B(0, 6)$ , and  $C(3, 1)$ . Then graph its image as a reflection over the  $x$ -axis.



- 5.) Graph  $\triangle ABC$  with  $A(-6, -4)$ ,  $B(-3, -1)$ , and  $C(-2, -5)$ . Then graph its image as a reflection about the  $y$ -axis.



- 6.) Graph  $\triangle ABC$  with  $A(-4, 5)$ ,  $B(-1, 3)$  and  $C(-3, -2)$ . Then graph its image as a reflection about  $y = x$ .



- 7.) Graph  $\triangle ABC$  with  $A(5, -2)$ ,  $B(3, -6)$ , and  $C(1, 2)$ . Then graph its image as a reflection about the origin.

