

Geometry Test Review
SOL G.2 + G.9

Name _____

Date _____

#1-6 Match each graph with the correct transformation

A. Reflection about the y-axis

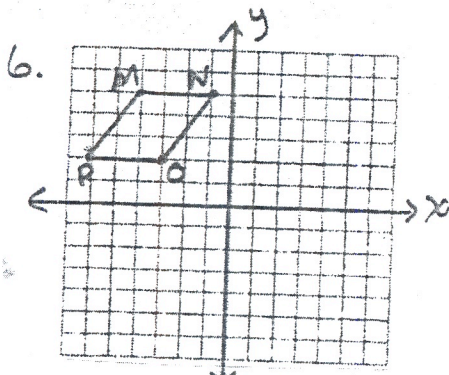
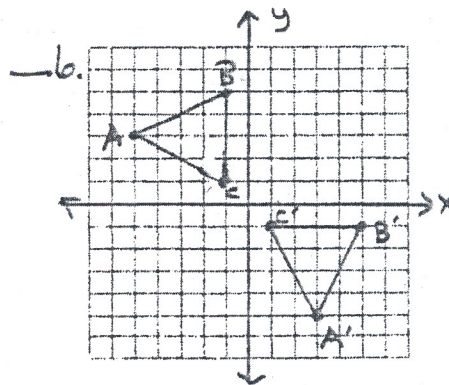
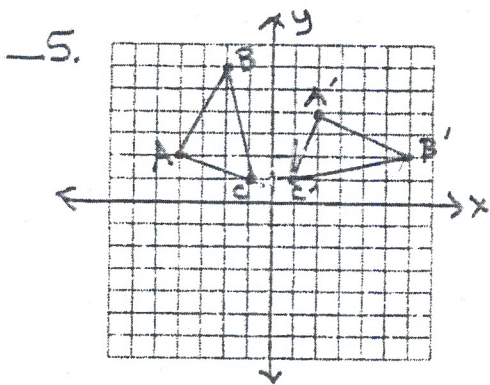
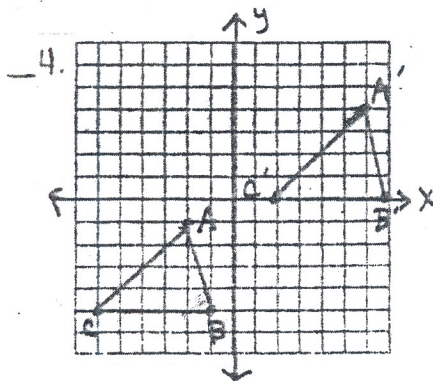
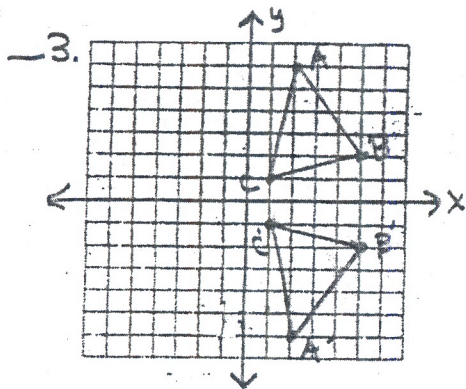
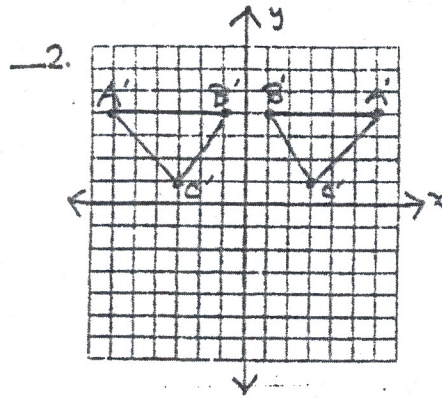
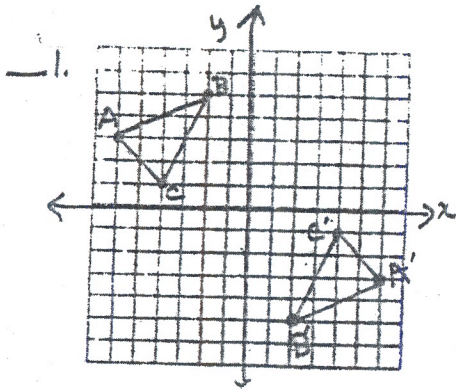
B. Reflection about the x-axis

C. Reflection about the origin (180° Rotation)

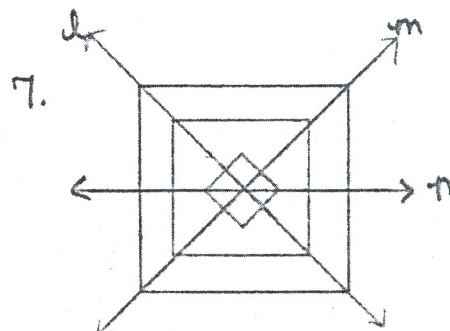
D. Reflection about $y=x$

E. 90° Rotation about the origin

F. Translation



Point M' is located at $(-2, -1)$ after it has been translated.
 O' is located at $(_, _)$.



This figure is apparently symmetric with respect to line(s) _____.