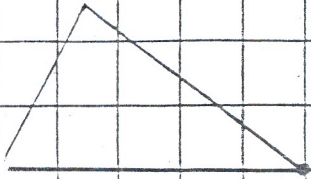


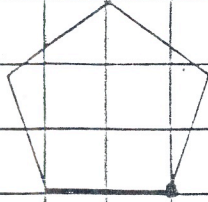
For each figure:

Draw an x - y axis, and rotate the figure about the indicated point, direction (CW - clockwise, CCW - counterclockwise) and the indicated degree.

1.  $90^\circ$  CW



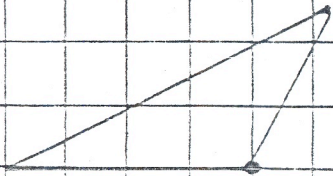
2.  $90^\circ$  CCW



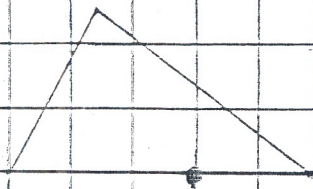
3.  $90^\circ$  CW



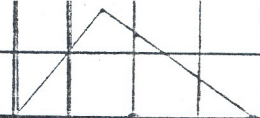
4.  $180^\circ$



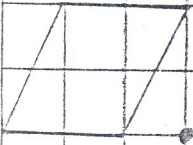
5.  $180^\circ$



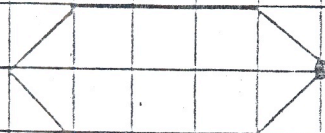
6.  $180^\circ$



7.  $90^\circ$  CW



8.  $90^\circ$  CW



9.  $90^\circ$  CCW

