

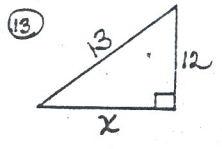
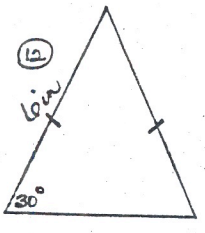
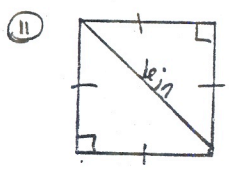
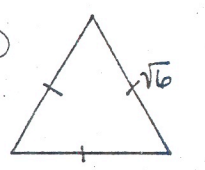
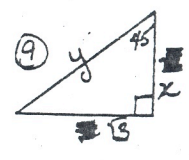
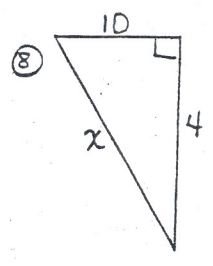
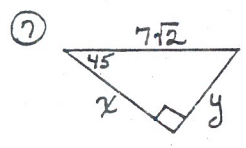
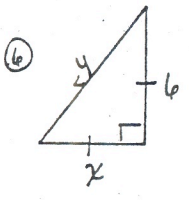
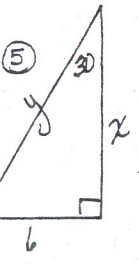
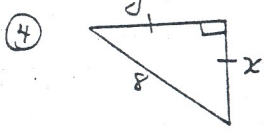
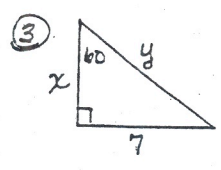
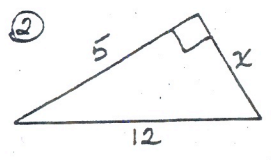
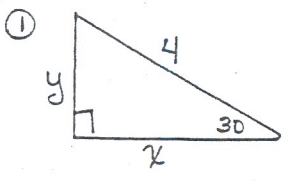
Right Triangle Review - Pre. Trig.

Decide which method you should use to solve for x and y.

- A) Pythagorean Theorem
- B) 45 - 45 - 90 triangle formula
- C) 30 - 60 - 90 triangle formulas

} Write formulas here + memorize

Label each triangle appropriately and show your work!! All answers must be simplified radicals with rationalized denominators - no decimals!!!!



find altitude
(draw first, you guys!)

find perimeter
→ area of square

find area -
need altitude first!

Simplify : $5\sqrt{300}$

⑭ rationalize denominator : $\sqrt{\frac{8}{5}}$

⑮ Simplify : $\sqrt{98}$

⑯ rationalize Denom. $\frac{5\sqrt{2}}{3\sqrt{5}}$

II. Classify each set of side lengths to be an acute triangle, obtuse triangle or right triangle. Show your work!!!

1) 12, 20, 16

2) 4, 9, 10

3) 7, 7, 8